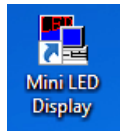


USB instructions for Desktop LED Display

1. Put the CD into the Computer CDROM drive (for those models which have a CD).
Or get the program from our website at www.kompusport.com/products/software/led_displays.html or scan the QR code for our website page.
2. If downloading from our website, copy files from the zip file to your hard drive.
3. From CD or file location, run the Install.exe file.
4. The "Install Program" option will install the Mini LED Display program which will allow you to display up to 8 messages on the LED Display. This allows for a quick and easy setup.

The "Professional Program" option will install the BMPBadge program which will give you pixel level design for up to 8 messages on the LED Display. This is a more advanced setup.

5. These 2 icons will be setup on your desktop:



For Mini LED Display: (easy method)

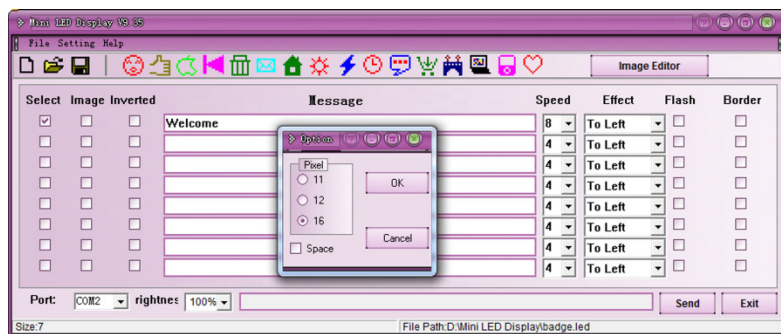
6. Set the Setting -> Option -> Pixel to "16".
7. Connect the LED Display to a USB port on the computer.
8. Select the proper port in the drop-down box in lower left corner of the program.
9. Select messages to be sent to the LED Display by checking boxes under the Select column.
10. Press the Send button and message(s) will be sent to the LED Display.

For Professional Program: (pixel level control & font selection of messages)

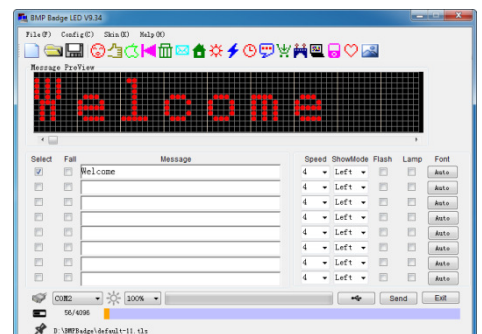
6. Set the Config -> Option -> Card Type Setup to "Mono 16 pixels".
7. Connect the LED Display to a USB port on the computer.
8. Select the proper port in the drop-down box in lower left corner of the program.
9. Select messages to be sent to the LED Display by checking boxes under the Select column.
10. Press Send button and message(s) will be sent to the LED Display.

Editing Messages:

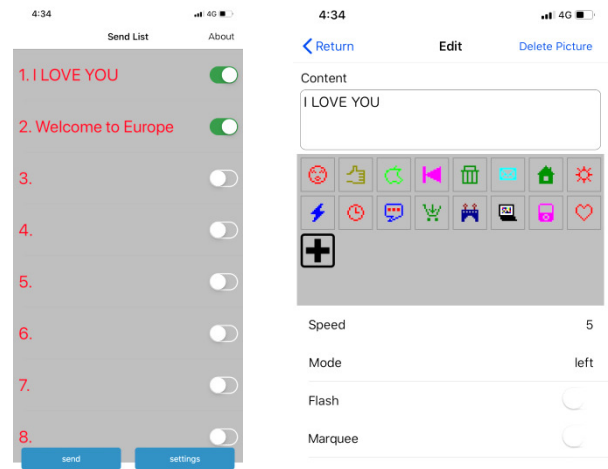
- Input 1-8 different messages as you wish.
- Select display Speed - Level 1 Slowest to Level 8 Fastest.
- Select display Effect, Flash and Border to suit your need.
- You can also add images, invert the text, and change the font (BMPBadge only).



Mini LED Display screen



BMPBadge screen



Bluetooth Phone App screens

Bluetooth instructions for Desktop LED Display

1. Search for "Bluetooth LED Name Badge" in Play Store (Android). Or search for "LED Badge" in App Store (Apple). Or use QR code on other side of these instructions to visit our website where you can find links and QR codes to these apps as well.
2. Make sure cellphone Bluetooth is enabled.
3. Run App
4. Press Settings button and select "16".
5. Click message to edit it.
6. Type message, select Speed, Mode and whether to display Flash or Marquee.
7. Graphic symbols can be included in message. Press **+** to create a custom symbol.
8. Click **<** to return to the Send List screen.
9. Turn on the LED Display and then press first button for 2-3 seconds. Bluetooth icon will appear.
10. Press Send button to send message. **(No need to pair the LED Display, it is automatic)**



Mobile App Icon



Play Store (Android)



App Store (Apple)



For support or to order more Desktop LED Displays or LED Name Badges:

www.kompusport.com
(630) 882-2364
support@kompusport.com

We sell at local train shows and by phone.
Visit our website for info and train show schedule at
www.kompusport.com/products/hardware/led_displays.html

